

IEEE Std C135.20-1998

(Revision of
ANSI C135.20-1988)

IEEE Standard for Zinc-Coated Ferrous Insulator Clevises for Overhead Line Construction

Sponsor

**Transmission and Distribution Committee
of the
IEEE Power Engineering Society**

Approved 19 March 1998

IEEE-SA Standards Board

Abstract: Zinc-coated ferrous clevises for spool-type insulators commonly used for supporting or dead-ending conductors in line construction are covered. The specifications for spool-type insulators used with these clevises are covered in ANSI C29.3-1986.

Keywords: clevis pin, dead-end loading, side loading, spool-type insulators, swinging insulator clevises, zinc-coated ferrous clevises

The Institute of Electrical and Electronics Engineers, Inc.
345 East 47th Street, New York, NY 10017-2394, USA

Copyright © 1998 by the Institute of Electrical and Electronics Engineers, Inc.
All rights reserved. Published 1998. Printed in the United States of America.

ISBN 0-7381-0193-1

No part of this publication may be reproduced in any form, in an electronic retrieval system or otherwise, without the prior written permission of the publisher.

IEEE Standards documents are developed within the IEEE Societies and the Standards Coordinating Committees of the IEEE Standards Association (IEEE-SA) Standards Board. Members of the committees serve voluntarily and without compensation. They are not necessarily members of the Institute. The standards developed within IEEE represent a consensus of the broad expertise on the subject within the Institute as well as those activities outside of IEEE that have expressed an interest in participating in the development of the standard.

Use of an IEEE Standard is wholly voluntary. The existence of an IEEE Standard does not imply that there are no other ways to produce, test, measure, purchase, market, or provide other goods and services related to the scope of the IEEE Standard. Furthermore, the viewpoint expressed at the time a standard is approved and issued is subject to change brought about through developments in the state of the art and comments received from users of the standard. Every IEEE Standard is subjected to review at least every five years for revision or reaffirmation. When a document is more than five years old and has not been reaffirmed, it is reasonable to conclude that its contents, although still of some value, do not wholly reflect the present state of the art. Users are cautioned to check to determine that they have the latest edition of any IEEE Standard.

Comments for revision of IEEE Standards are welcome from any interested party, regardless of membership affiliation with IEEE. Suggestions for changes in documents should be in the form of a proposed change of text, together with appropriate supporting comments.

Interpretations: Occasionally questions may arise regarding the meaning of portions of standards as they relate to specific applications. When the need for interpretations is brought to the attention of IEEE, the Institute will initiate action to prepare appropriate responses. Since IEEE Standards represent a consensus of all concerned interests, it is important to ensure that any interpretation has also received the concurrence of a balance of interests. For this reason, IEEE and the members of its societies and Standards Coordinating Committees are not able to provide an instant response to interpretation requests except in those cases where the matter has previously received formal consideration.

Comments on standards and requests for interpretations should be addressed to:

Secretary, IEEE-SA Standards Board
445 Hoes Lane
P.O. Box 1331
Piscataway, NJ 08855-1331
USA

Note: Attention is called to the possibility that implementation of this standard may require use of subject matter covered by patent rights. By publication of this standard, no position is taken with respect to the existence or validity of any patent rights in connection therewith. The IEEE shall not be responsible for identifying patents for which a license may be required by an IEEE standard or for conducting inquiries into the legal validity or scope of those patents that are brought to its attention.

Authorization to photocopy portions of any individual standard for internal or personal use is granted by the Institute of Electrical and Electronics Engineers, Inc., provided that the appropriate fee is paid to Copyright Clearance Center. To arrange for payment of licensing fee, please contact Copyright Clearance Center, Customer Service, 222 Rosewood Drive, Danvers, MA 01923 USA; (508) 750-8400. Permission to photocopy portions of any individual standard for educational classroom use can also be obtained through the Copyright Clearance Center.

Introduction

(This introduction is not part of IEEE Std C135.20-1998, IEEE Standard for Zinc-Coated Ferrous Insulator Clevises for Overhead Line Construction.)

This standard covers zinc-coated ferrous clevises for spool-type insulators commonly used for supporting or dead-ending conductors in line construction. The specifications for spool-type insulators used with these clevises are covered in ANSI C29.3-1986.

At the time this standard was completed, the Working Group On Pole Line Hardware had the following membership:

Ronald J. Oedemann, *Chair*

Nick Annas
James E. Applequist
Frederick W. Burtleson
Rick Chapel
Bill Cundiff
Edward Dziedzic
Dale Easley
John Farrington
John Flynn

Donald Heald
Richard W. Hensel
Nunnally Johnson
Ralph O. Jones
Edward A. Kiernozek
David J. Koury
Keith Lindsey
Andy Meyer
Tom Murphy
Robert C. Peters

Patrick D. Quinn
Steve D. Scholfield
Richard J. Serocki
Chris Severs
Doug Sherman
Stephen F. Smith
Ronald L. Spees
John Trostle
Nevins Wilburn

The following persons were on the balloting committee:

James E. Applequist
Joseph F. Buch
Kris K. Buchholz
W. H. Cole
Leonard F. Consalvo
William T. Croker
Glenn A. Davidson
Frank A. Denbrock
John Farrington
Lowell H. Fink
Donald A. Gillies
Edwin J. "Tip" Goodwin

Richard W. Hensel
Magdi F. Ishac
Ralph O. Jones
Robert O. Kluge
Nestor Kolcio
David J. Koury
Robert C. Latham
Joel H. Mallory
J. David Mitchell
Franklin D. Myers
Ronald J. Oedemann
Mohammad A. Pasha
Robert C. Peters

J. L. Price
Patrick D. Quinn
John S. Rumble
Donald Sandell
Steve D. Scholfield
Richard J. Serocki
Stephen F. Smith
Ronald L. Spees
Dave Sunkle
Richard B. Taylor
John Torok
Daniel J. Ward

When the IEEE-SA Standards Board approved this standard on 19 March 1998, it had the following membership:

Richard J. Holleman, *Chair*

Donald N. Heirman, *Vice Chair*

Judith Gorman, *Secretary*

Satish K. Aggarwal
Clyde R. Camp
James T. Carlo
Gary R. Engmann
Harold E. Epstein
Jay Forster*
Thomas F. Garrity
Ruben D. Garzon

James H. Gurney
Jim D. Isaak
Lowell G. Johnson
Robert Kennelly
E. G. "Al" Kiener
Joseph L. Koepfinger*
Stephen R. Lambert
Jim Logothetis
Donald C. Loughry

L. Bruce McClung
Louis-François Pau
Ronald C. Petersen
Gerald H. Peterson
John B. Posey
Gary S. Robinson
Hans E. Weinrich
Donald W. Zipse

*Member Emeritus

Catherine K.N. Berger
IEEE Standards Project Editor

Contents

1.	Overview.....	1
	1.1 Scope.....	1
	1.2 Application.....	1
2.	References.....	1
3.	Materials	2
	3.1 Clevises and clevis pins	2
	3.2 Cotters	2
4.	Strength.....	2
	4.1 Dead-end loading	2
	4.2 Side loading	2
5.	Dimensions	2
6.	Testing.....	9
	6.1 Porcelain spool insulators	9
	6.2 Clevises	9
7.	Corrosion protection	9
8.	Finish	9
9.	Marking.....	9
10.	Sizes	9

IEEE Standard for Zinc-Coated Ferrous Insulator Clevises for Overhead Line Construction

1. Overview

1.1 Scope

This standard covers zinc-coated ferrous clevises for spool-type insulators commonly used for supporting or dead-ending conductors in line construction.

The standards for spool-type insulators used with these clevises are covered in ANSI C29.3-1986.

1.2 Application

Clevises and clevis pins conforming to this standard shall meet in all respects the dimensional and performance requirements hereinafter stated. The text, specifications, references to other standards, and associated figures supplement each other and shall be considered as part of this standard.

2. References

This standard shall be used in conjunction with the following publications. When the following standards are superseded by an approved revision, the revision shall apply.

ANSI C29.3-1986 (Reaff 1995), Wet-Process Porcelain Insulators (Spool Type).¹

ASTM A153/A153M-95, Zinc Coating (Hot-Dip) on Iron and Steel Hardware.²

¹ANSI publications are available from the Sales Department, American National Standards Institute, 11 West 42nd Street, 13th Floor, New York, NY 10036, USA.

²ASTM publications are available from the American Society for Testing and Materials, 100 Barr Harbor Drive, West Conshohocken, PA 19428-2959, USA.

3. Materials

3.1 Clevises and clevis pins

Clevises and clevis pins for spool-type insulators shall be made from one of the following materials:

- a) Hot rolled open-hearth steel;
- b) Basic oxygen steel;
- c) Electric furnace steel.

Materials shall be of a grade and quality suitable to meet the strength and performance requirements of this standard.

3.2 Cotters

Cotters for clevis pins shall be self-locking and made from corrosion-resistant materials.

4. Strength

4.1 Dead-end loading

Refer to Figures 1 through 5 for specific ultimate strengths.

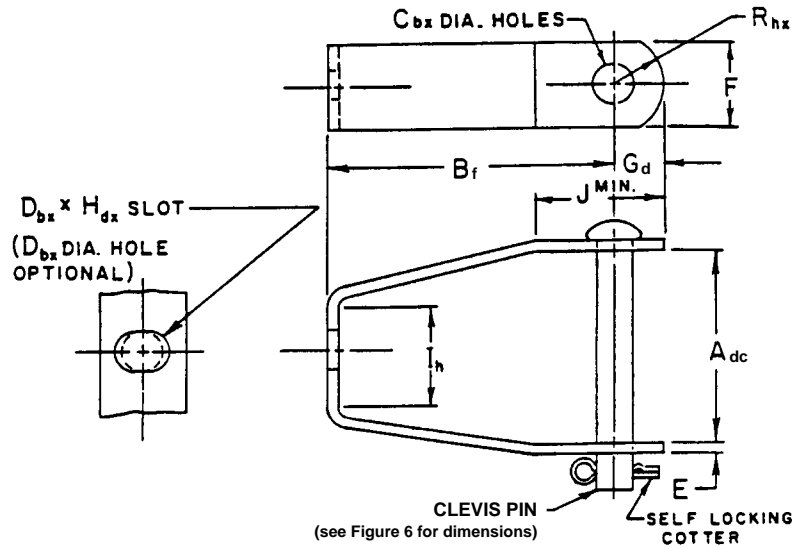
Dead-end load shall be applied in a direction in line with the mounting bolt and perpendicular to the clevis pin. The clevis shall be capable of withstanding the specified ultimate strength loading without any permanent deformation.

4.2 Side loading

Items 5, 6, and 7 in Figure 3 shall be capable of withstanding a side pull loading of 4.5 kN (1000 lb) applied at 90° to the axis of both the mounting bolt and the clevis pin, without exceeding a test deflection of 10 mm (3/8 in) and a permanent deflection of 6 mm (1/4 in), measured at the center of the clevis pin.

5. Dimensions

Dimensions and tolerances shall be in accordance with Figures 1 through 6.



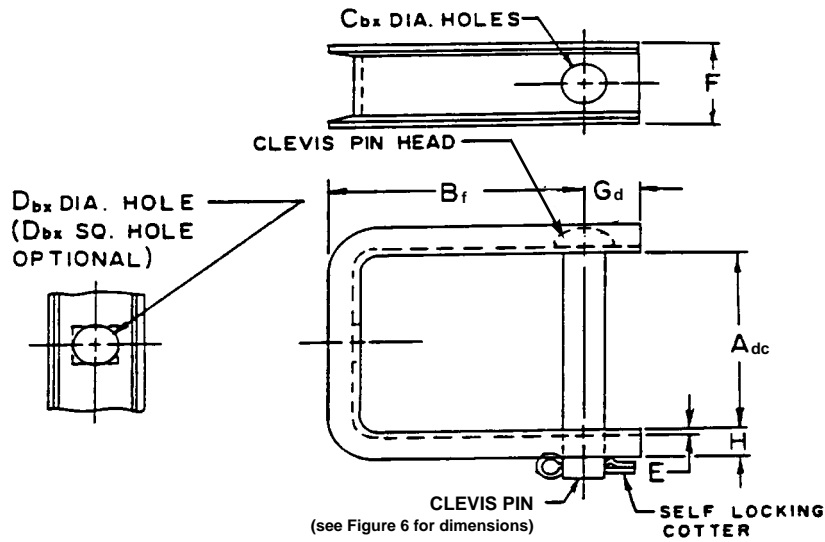
Metric units for dimensions (mm)												
Item	Ultimate strength (kN)	A	B	C	D	E	F	G	H	I	J	R
1	9	60	108	14	17	5	38	22	19	38	52	22
2	18	86	127	17	17	5	38	22	19	38	52	22

Allowable variations:
 a = 1; b = 1; c = 2; d = 3; e = 5; f = 6; g = 10; h = 13; x = 0
 Single letter indicates same + or -, (a = + or - 1)
 Two letters indicate first + second -, (ax = +1, -0)
 Dimensions without tolerance are reference.

English units for dimensions (in)												
Item	Ultimate strength (lb)	A	B	C	D	E	F	G	H	I	J	R
1	2000	2-3/8	4-1/4	9/16	11/16	3/16	1-1/2	7/8	3/4	1-1/2	2-1/16	7/8
2	4000	3-3/8	5	11/16	11/16	3/16	1-1/2	7/8	3/4	1-1/2	2-1/16	7/8

Allowable variations:
 a = 1/64; b = 1/32; c = 1/16; d = 1/8; e = 3/16; f = 1/4; g = 3/8; h = 1/2; x = 0
 Single letter indicates same + or -, (a = + or - 1/64)
 Two letters indicate first + second -, (ax = +1/64, -0)
 Dimensions without tolerance are reference.

Figure 1—Clevises for 54 mm (2-1/8 in) and 81 mm (3-3/16 in) spool-type insulators



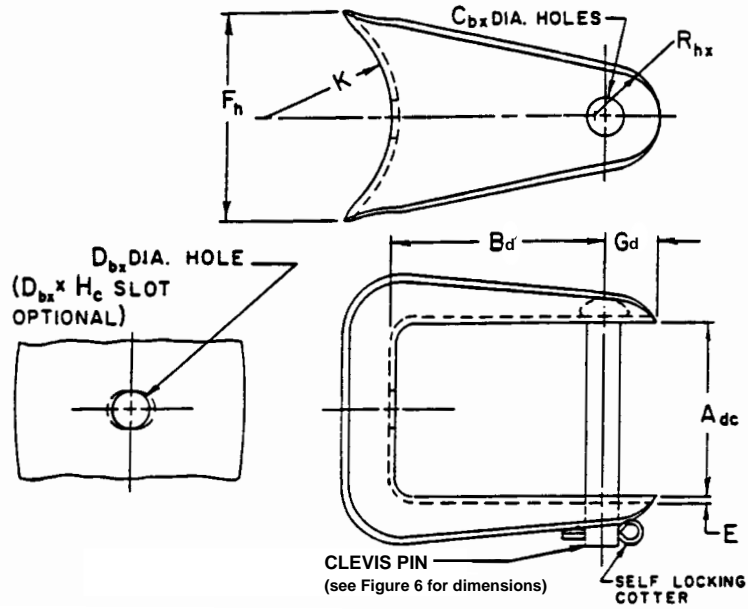
Metric units for dimensions (mm)									
Item	Ultimate strength (kN)	A	B	C	D	E	F	G	H
3	13.5	86	102	17	17	3	32	22	13
4	18	86	102	17	17	3	38	22	13

Allowable variations:
 $a = 1$; $b = 1$; $c = 2$; $d = 3$; $e = 5$; $f = 6$; $g = 10$; $h = 13$; $x = 0$
 Single letter indicates same + or -, ($a = +$ or $-$)
 Two letters indicate first + second -, ($ax = +1, -0$)
 Dimensions without tolerance are reference.

English units for dimensions (in)									
Item	Ultimate strength (lb)	A	B	C	D	E	F	G	H
3	3000	3-3/8	4	11/16	11/16	1/8	1-1/4	7/8	1/2
4	4000	3-3/8	4	11/16	11/16	1/8	1-1/2	7/8	1/2

Allowable variations:
 $a = 1/64$; $b = 1/32$; $c = 1/16$; $d = 1/8$; $e = 3/16$; $f = 1/4$; $g = 3/8$; $h = 1/2$; $x = 0$
 Single letter indicates same + or -, ($a = +$ or $-$)
 Two letters indicate first + second -, ($ax = +1/64, -0$)
 Dimensions without tolerance are reference.

Figure 2—Clevises for 76.2 mm (3 in) and 81 mm (3-3/16 in) spool-type insulators



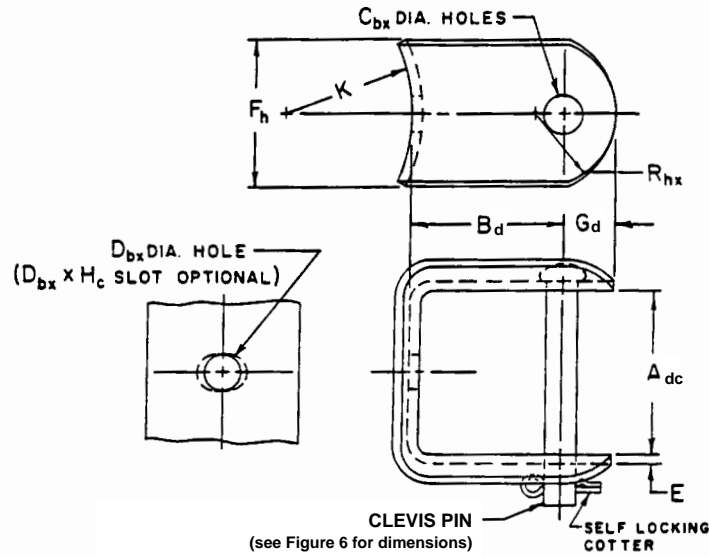
Metric units for dimensions (mm)												
Item	Ultimate strength (kN)	A	B	C	D	E	F	G	H	K	R	Side pull (kN)
5	13.5	86	102	17	17	3	89	22	22	70	25	4.5
6	18	86	102	17	17	4	89	22	22	89	25	4.5
7	18	86	102	17	17	3	102	25	—	60	25	4.5

Allowable variations:
 a = 1; b = 1; c = 2; d = 3; e = 5; f = 6; g = 10; h = 13; x = 0
 Single letter indicates same + or -, (a = + or - 1)
 Two letters indicate first + second -, (ax = +1, -0)
 Dimensions without tolerance are reference.

English units for dimensions (in)												
Item	Ultimate strength (lb)	A	B	C	D	E	F	G	H	K	R	Side pull (lb)
5	3000	3-3/8	4	11/16	11/16	12 GA (0.109)	3-1/2	7/8	7/8	2-3/4	1	1000
6	4000	3-3/8	4	11/16	11/16	9 GA (0.148)	3-1/2	7/8	7/8	3-1/2	1	1000
7	4000	3-3/8	4	11/16	11/16	1/8	4	1	—	2-3/8	1	1000

Allowable variations:
 a = 1/64; b = 1/32; c = 1/16; d = 1/8; e = 3/16; f = 1/4; g = 3/8; h = 1/2; x = 0
 Single letter indicates same + or -, (a = + or - 1/64)
 Two letters indicate first + second -, (ax = +1/64, -0)
 Dimensions without tolerance are reference.

Figure 3—Clevises for 76.2 mm (3 in) and 81 mm (3-3/16 in) spool-type insulators



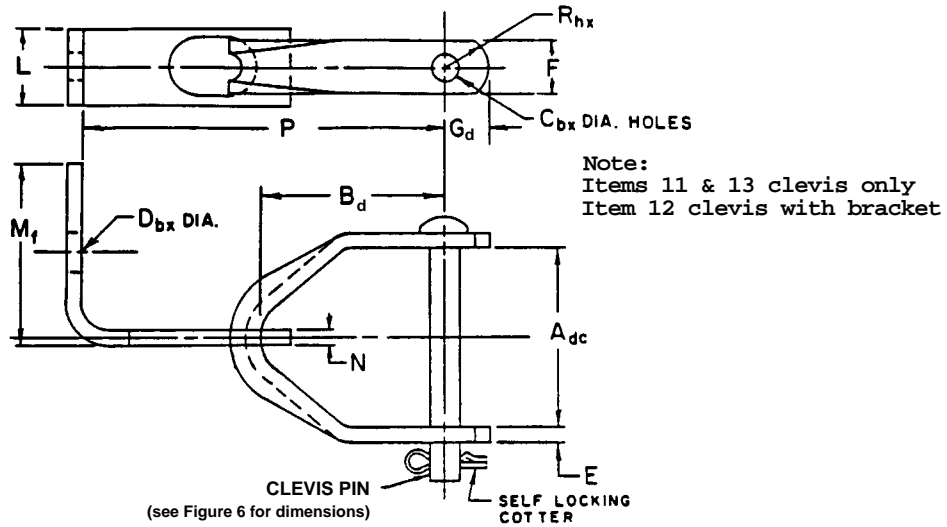
Metric units for dimensions (mm)											
Item	Ultimate strength (kN)	A	B	C	D	E	F	G	H	K	R
8	18	86	76	17	17	5	75	22	22	64	41
9	18	86	89	17	17	5	75	22	22	64	41
10	18	86	102	17	17	5	75	22	22	64	41

Allowable variations:
a = 1; b = 1; c = 2; d = 3; e = 5; f = 6; g = 10; h = 13; x = 0
Single letter indicates same + or -, (a = + or - 1)
Two letters indicate first + second -, (ax = +1, -0)
Dimensions without tolerance are reference.

English units for dimensions (in)											
Item	Ultimate strength (lb)	A	B	C	D	E	F	G	H	K	R
8	4000	3-3/8	3	11/16	11/16	3/16	2-15/16	7/8	7/8	2-1/2	1-5/8
9	4000	3-3/8	3-1/2	11/16	11/16	3/16	2-15/16	7/8	7/8	2-1/2	1-5/8
10	4000	3-3/8	4	11/16	11/16	3/16	2-15/16	7/8	7/8	2-1/2	1-5/8

Allowable variations:
a = 1/64; b = 1/32; c = 1/16; d = 1/8; e = 3/16; f = 1/4; g = 3/8; h = 1/2; x = 0
Single letter indicates same + or -, (a = + or - 1/64)
Two letters indicate first + second -, (ax = +1/64, -0)
Dimensions without tolerance are reference.

Figure 4—Clevises for 81 mm (3-3/16 in) spool-type insulators



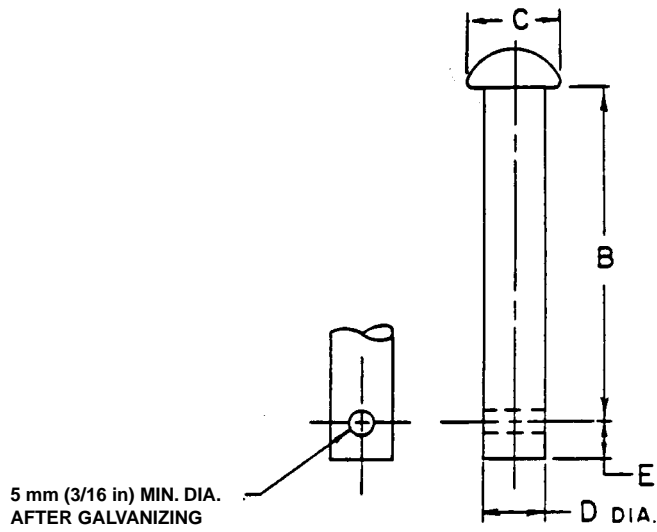
Metric units for dimensions (mm)													
Item	Ultimate strength (kN)	A	B	C	D	E	F	G	L	M	N	P	R
11	4.5	86	129	17	—	5	38	22	—	—	—	—	22
12	9	60	59	11	17	5	19	13	44	59	5	121	11
13	9	60	59	11	—	5	19	13	—	—	—	—	11

Allowable variations:
a = 1; b = 1; c = 2; d = 3; e = 5; f = 6; g = 10; h = 13; x = 0
Single letter indicates same + or -, (a = + or - 1)
Two letters indicate first + second -, (ax = +1, -0)
Dimensions without tolerance are reference.

English units for dimensions (in)													
Item	Ultimate strength (lb)	A	B	C	D	E	F	G	L	M	N	P	R
11	4000	3-3/8	5-1/16	11/16	—	3/16	1-1/2	7/8	—	—	—	—	7/8
12	2000	2-3/8	2-5/16	7/16	11/16	3/16	3/4	1/2	1-3/4	2-5/16	3/16	4-3/4	7/16
13	2000	2-3/8	2-5/16	7/16	—	3/16	3/4	1/2	—	—	—	—	7/16

Allowable variations:
a = 1/64; b = 1/32; c = 1/16; d = 1/8; e = 3/16; f = 1/4; g = 3/8; h = 1/2; x = 0
Single letter indicates same + or -, (a = + or - 1/64)
Two letters indicate first + second -, (ax = +1/64, -0)
Dimensions without tolerance are reference.

Figure 5—Swinging insulator clevises for 54 mm (2-1/8 in) and 81 mm (3-3/16 in) spool-type insulators



Metric units for dimensions (mm)				
Clevis item number	B	C	D	E
1	75 _d	19 _{dc}	13 _b	6
2, 5, 6, and 7	105 _d	22 _{dc}	16 _b	6
3, 4, 8, 9, and 10	108 _d	22 _{dc}	16 _b	6
11	102 _d	22 _{dc}	16 _b	6
12 and 13	75 _d	16 _{dc}	10 _b	6

Allowable variations:
a = 1; b = 1; c = 2; d = 3; e = 5; f = 6; g = 10; h = 13; x = 0
Single letter indicates same + or -, (a = + or - 1)
Two letters indicate first + second -, (ax = +1, -0)
Dimensions without tolerance are reference.

English units for dimensions (in)				
Clevis item number	B	C	D	E
1	2-15/16 _d	3/4 _{dc}	1/2 _b	1/4
2, 5, 6, and 7	4-1/8 _d	7/8 _{dc}	5/8 _b	1/4
3, 4, 8, 9, and 10	4-1/4 _d	7/8 _{dc}	5/8 _b	1/4
11	4 _d	7/8 _{dc}	5/8 _b	1/4
12 and 13	2-15/16 _d	5/8 _{dc}	3/8 _b	1/4

Allowable variations:
a = 1/64; b = 1/32; c = 1/16; d = 1/8; e = 3/16; f = 1/4; g = 3/8;
h = 1/2; x = 0
Single letter indicates same + or -, (a = + or - 1/64)
Two letters indicate first + second -, (ax = +1/64, -0)
Dimensions without tolerance are reference.

Figure 6—Clevis pins for insulator clevises

6. Testing

6.1 Porcelain spool insulators

Appropriate porcelain spool insulators meeting the requirements of ANSI C29.3-1986 shall be used in testing. The load shall be applied by means of a loop of flexible stranded cable, the diameter of which shall not exceed the radius of the wire grooves of the spool insulators. The failure of the spool insulator, if such failure is related to the deformation of the clevis, shall also constitute a failure of the clevis.

6.2 Clevises

For testing, the clevises shall be attached to a steel block, and where applicable, the steel block shall have a radius conforming to the radius of the clevis.

7. Corrosion protection

All clevises and clevis pins shall be zinc coated after fabrication. The coating shall be applied using one of the following methods:

- a) The hot dip process in accordance with ASTM A153/A153M-95. The hole for the cotter may be drilled after zinc coating.
- b) Any other method producing a zinc coating that meets the requirements of ASTM A153/A153M-95 for adhesion, purity, and thickness applicable to the class of the material being coated.

8. Finish

All clevises shall be reasonably smooth on all surfaces and free from sharp projections and edges. Cotters shall be cut squarely and be free of sharp projections.

9. Marking

Clevises shall bear the manufacturer's symbol or identification mark.

10. Sizes

Clevises covered by this standard are intended for use with the spool-type insulators listed in Table 1, which are covered in ANSI C29.3-1986.

Table 1—Spool-type insulators covered in ANSI C29.3-1986

Insulator class	Load rating kN (lb)	Size mm (in)	Clevis item no.
53.1	9.0 (2000)	54 (2-1/8)	1, 12, 13
53.2	13.5 (3000)	76 (3)	3, 5
53.3	18.0 (4000)	81 (3-3/16)	2, 4, 6, 7, 8, 9, 10, 11